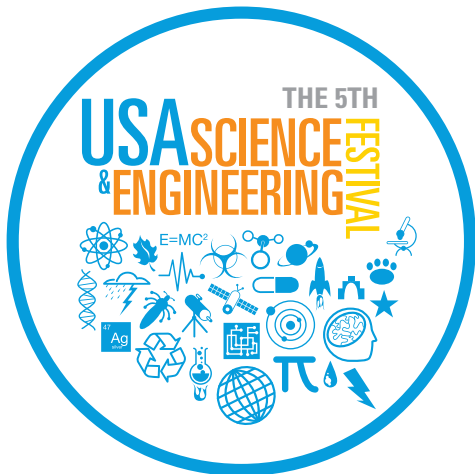


2018 EXPO MAP



SATURDAY, APRIL 7 | 10AM - 6PM
SUNDAY, APRIL 8 | 10AM - 4PM
WALTER E. WASHINGTON CONVENTION CENTER



LOCKHEED MARTIN



CAREER PAVILION INFO

**SEE WHERE A
STEM CAREER
CAN TAKE YOU**
AT THE CAREER PAVILION

AT THE CAREER PAVILION

JOB FAIR

Explore tomorrow's hot careers in areas such as renewable energy, robotics, space tourism, nano-technology, virtual reality, clean technology, genetics, education and many other exciting fields.

COLLEGE FAIR

George Mason University, Embry-Riddle Aeronautical University, Lawrence Tech University, Salisbury University, VCU Engineering, University of Kentucky and 30+ more.

STEM PROGRAMS EXPOSITION

Find out about internships, mentorships, scholarships and after-school programs.

AND...



meet the
**SCIENTIST &
ENGINEER**

Explore tomorrow's hot careers in areas such as renewable energy, robotics, space tourism, nanotechnology, virtual reality, clean technology, genetics, education and many other exciting fields.

COLLEGE FAIR

George Mason University, Embry-Riddle
Aeronautical University, Lawrence
Tech University, Salisbury University,
VCU Engineering, University of
Kentucky and 30+ more.

STEM PROGRAMS EXPOSITION

Find out about internships, mentorships, scholarships and after-school programs.


AND...

meet the
**SCIENTIST &
ENGINEER**

MEET THE SCIENTISTS & ENGINEERS

Every hour students can conduct in-person interviews with scientists and engineers from the following organizations. **Sample questions to ask:** What kind of work do you do on a daily basis? What is your favorite part of your job? What challenges have you encountered? What kind of training does one need to get your job?

SATURDAY	SUNDAY
10:05am – 10:50am Booz Allen Hamilton	11:00am – 11:50am U.S. Department of Agriculture (USDA)
11:00am – 11:50am Lockheed Martin	12:00pm – 12:50pm U.S. Department of State
12:00pm – 12:50pm National Institutes of Health (NIH)	1:00pm – 1:50pm American Association for the Advancement of Science (AAAS)
1:00pm – 1:50pm National Aeronautics and Space Administration (NASA)	2:00pm – 2:50pm American Society of Microbiology (ASM)
2:00pm – 2:50pm National Science Foundation (NSF)	
3:00pm – 3:50pm American Chemical Society (ACS)	
4:00pm – 4:50pm American Association for the Advancement of Science (AAAS)	



VISIT US IN THE MIDDLE OF
THE CAREER PAVILION!

Every hour students can conduct in-person interviews with scientists and engineers from the following organizations. **Sample questions to ask:** What kind of work do you do on a daily basis? What is your favorite part of your job? What challenges have you encountered? What kind of training does one need to get your job?

SATURDAY
10:05am – 10:50am
Booz Allen Hamilton
11:00am - 11:50am
Lockheed Martin
12:00pm - 12:50pm
National Institutes of Health (NIH)
1:00pm - 1:50pm
National Aeronautics and Space Administration (NASA)
2:00pm - 2:50pm
National Science Foundation (NSF)
3:00pm - 3:50pm
American Chemical Society (ACS)
4:00pm - 4:50pm
American Association for the Advancement of Science (AAAS)

10:05am – 10:50am

Booz Allen Hamilton

11:00am - 11:50am

Lockheed Martin

12:00pm - 12:50pm

National Institutes of Health (NIH)

1:00pm - 1:50pm

National Aeronautics and Space Administration (NASA)

2:00pm - 2:50pm

National Science Foundation (NSF)

3:00pm - 3:50pm

American Chemical Society (ACS)

4:00pm - 4:50pm

**American Association for the Advancement
of Science (AAAS)**

SUNDAY
11:00am - 11:50am
U.S. Department of Agriculture (USDA)
12:00pm - 12:50pm
U.S. Department of State
1:00pm - 1:50pm
American Association for the Advancement of Science (AAAS)
2:00pm - 2:50pm
American Society of Microbiology (ASM)

11:00am - 11:50am

U.S. Department of Agriculture (USDA)

12:00pm - 12:50pm

U.S. Department of State

1:00pm - 1:50pm

**American Association for the Advancement
of Science (AAAS)**

2:00pm - 2:50pm

American Society of Microbiology (ASM)



**VISIT US IN THE MIDDLE OF
THE CAREER PAVILION!**



LOWER LEVEL (HALLS A, B, C)

EARTH SCIENCES

HEALTH & MEDICINE

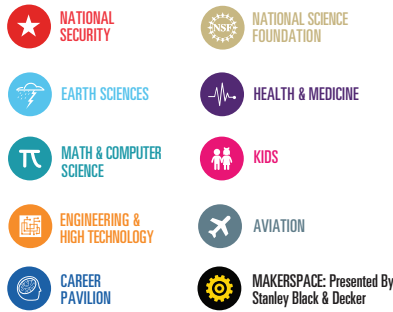
HALL A ENTRANCE

L STREET ABOVE

ICON LEGEND



PAVILION LEGEND



HALLS A,B,C

HALLS D,E



Scale: To walk from Hall A to Hall C is the same length as 1.5 football fields.

MT VERNON PLACE BELOW

HALL D

2ND LEVEL (HALLS D, E)



LEFT HALF OF 2ND LEVEL CUT & GLUE/TAPE TO RIGHT HALF OF 2ND LEVEL)

HALL E



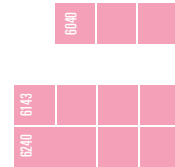
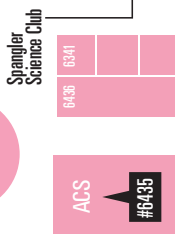
ADA SEATING

Einstein Stage

Don't miss Steve Spangler, Grand Hank, Jason Latimer and the 3M Visiting Wizards



STEAM & SOCIAL SCIENCES



ACS #6435

Spangler Science Club

6040

6240 6143

6342 6241 6338

6436 6341



OCEAN

Meet the manatee rescue team!



#5537

5838

5837 NOAA

#5835

Steer Digital

Big Blue & You with Danni Washington!

Orbital ATK

INFO BOOTH E



USPS

6320 627 6123

#6407

6025

#6019

SpaceX

#5924

Space Camp & Aviation Challenge

NASA #5509

CASIS #5829

ePlanetarium #5508

Space Exploration

The American Petroleum Institute

American Society for Microbiology

AAAS #6201

ThermoFisher Scientific #6311

Sigma Xi & American Scientist #6410

6913

6415

6612

#6407

Carnegie Institution for Science

American Farm Bureau Foundation for Agriculture #6301

6204 6105

6101

#6210

6025

#6407

6123

#6220

Georgetown University

6025

#6407

6123

#6220

Georgetown University

6025

#6407

6123

#6220

Georgetown University

6025

#6407

6123

#6220

Georgetown University

6025

#6407

6123

#6220

Georgetown University

6025

#6407

6123

#6220

Georgetown University

6025

#6407

6123

#6220

Georgetown University

6025

#6407

6123

#6220

Georgetown University

6025

#6407

6123

#6220

Georgetown University

6025

#6407

6123

#6220

Georgetown University

6025

#6407

6123

#6220

Georgetown University

6025

#6407

6123

#6220

Georgetown University

6025

#6407

6123

#6220

Georgetown University

6025

#6407

6123

#6220

Georgetown University

6025

#6407

6123

#6220

Georgetown University

6025

#6407

6123

#6220

Georgetown University

6025

#6407

6123

#6220

Georgetown University

6025

#6407

6123

#6220

Georgetown University

6025

#6407

6123

#6220

Georgetown University

6025

#6407

6123

#6220

Georgetown University

6025

#6407

6123

#6220

Georgetown University

6025

#6407

6123

#6220

Georgetown University

6025

#6407

6123

#6220

Georgetown University

6025

#6407

6123

#6220

Georgetown University

6025

#6407

6123

#6220

Georgetown University

6025

#6407

6123

#6220

Georgetown University

6025

#6407

6123

#6220

Georgetown University

6025

#6407

6123

#6220

Georgetown University

6025

#6407

6123

#6220

Georgetown University

6025

#6407

6123

#6220

Georgetown University

6025

#6407

6123

#6220

Georgetown University

6025

#6407

6123

#6220

Georgetown University

6025

#6407

6123

#6220

Georgetown University

6025

#6407

6123

#6220

Georgetown University

6025

#6407

6123

#6220

Georgetown University

6025

#6407

6123

#6220

Georgetown University

6025

#6407

6123

#6220

Georgetown University

6025

#6407

6123

#6220

Georgetown University

6025

#6407

6123

#6220

Georgetown University

6025

#6407

6123

#6220

Georgetown University

6025

#6407

6123

#6220

Georgetown University

6025

#6407

6123

#6220

Georgetown University

6025

#6407

6123

#6220

Georgetown University

6025

#6407

6123

#6220

Georgetown University

6025

#6407

6123

#6220

Georgetown University

6025

#6407

6123

#6220

Georgetown University

6025

#6407

6123

#6220

Georgetown University

6025

#6407

6123

#6220

Georgetown University

6025

#6407

6123

#6220

Georgetown University

6025

#6407

6123

#6220

Georgetown University

6025

#6407

6123

#6220

Georgetown University

6025

#6407

6123

#6220

Georgetown University

6025

#6407

6123

#6220

Georgetown University

6025

#6407

6123

#6220

Georgetown University

6025

STAGE PERFORMANCE SCHEDULE

STAGE →

SATURDAY

STAGE PERFORMANCE SCHEDULE

EINSTEIN

HALL E (2nd Level)

ALL SHOWS GREAT FOR ALL AGES

11:00am - 11:20am



Hands-on, High-Energy Science from
TV's DIY Sci Host - Steve Spangler



12:00pm - 1:00pm



Science is FUN
- 3M Visiting Wizards



1:30pm - 2:30pm



International Space Station - CASIS and Alex Hook from Nickelodeon's "I am Frankie"

3:00pm - 3:40pm



Girls in STEM - Abbott

4:00pm - 4:40pm



Explosive Science - Dr. Kate Biberdorf



5:00pm - 5:50pm



Rocking the World of STEM Education Through
Hip-Hop and Science Exploration - Grand Hank



CURIE

HALL C (Lower Level)

ALL SHOWS GREAT FOR ALL AGES

10:30am - 10:50am



Get Ready to Raise the Roof about STEM - Science Cheerleaders

11:00am - 11:30am



Science Communication
#SciComm -
Danni Washington



12:00pm - 12:50pm



Stunt Science: Behind the Scenes
of Spider-Man and Other Hollywood
Movies - Steve Wolf



1:30pm - 2:30pm

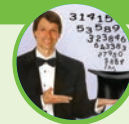


High Energy STEM 'Edu-tainment' - Darryl Lee Baynes

3:00pm - 3:50pm



Turning Math Into Magic
- Magician Art Benjamin



5:00pm - 5:30pm



USDA Takes Flight: Woody
Owl, Drones & More! - USDA



STAGE →

SUNDAY

STAGE PERFORMANCE SCHEDULE

EINSTEIN

HALL E (2nd Level)

11:00am - 11:40am



Journey to NASA
- Jessica Meir



12:30pm - 1:20pm



The 'Coolest' Show Around! Exploring Cryogenics with Mr. Freeze - Mr. Freeze

1:50pm - 2:40pm



Changing Education with
Wonder - Jason Latimer



3:00pm - 4:00pm



Science is FUN - 3M Visiting Wizards

ICONS LEGEND



CURIE

HALL C (Lower Level)

11:00am - 12:00pm

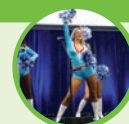


Are you Ready for a Science Showdown? - Franklin Institute

12:10pm - 12:30pm



Get Ready to Raise the
Roof about STEM
- Science Cheerleaders



1:00pm - 1:40pm



Explosive Science - Dr. Kate Biberdorf

2:00pm - 2:40pm



Stories of the Deep Blue - Danni Washington and Angela Sun

CURIE STAGE PRESENTED BY



Department of Defense
DoDSTEM
Science • Technology • Engineering • Mathematics



MEET DANNI WASHINGTON

Marine Biologist, TV Host & Ocean Advocate



Catch Danni's stage shows!

CURIE STAGE (HALL C)

11am on Saturday
2:00pm on Sunday

The USA Science & Engineering Festivals official Spokesperson, Danni Washington brings her deep passion about our oceans to you. Visit her at booth #5737 in the Ocean pavilion and learn about Big Blue & You!

TAKE A #SCIFEST SELFIE

SHOW US WHERE STEM TOOK YOU

INTO THE DEEP
BLUE



INTO
NATURE



INTO OUTER
SPACE



Find our lifesize STEM Can Take You images around the convention center and snap a selfie to share with the STEM world! Be sure to tag your photos with **#SCIFEST**.

MEET THE TINKERERS

Guy Raz and Mindy Thomas



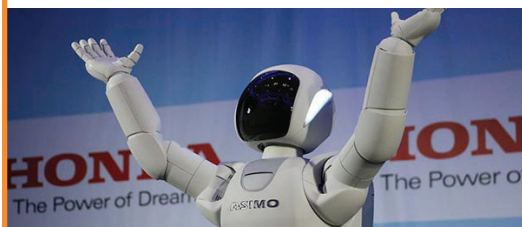
Meet Tinkercast's Chief Strategic Tinkers and Co-Creators of "Wow in the World", Guy and Mindy. Stop by the Photobooth of WOW Saturday and Sunday.

Guy & Mindy will also be signing autographs on Sunday from 12pm - 2pm, outside Hall D, near the Festival T-Shirts.



MEET ASIMO

Honda's Advanced Humanoid Robot



Catch ASIMO's stage shows!

Saturday

10:30am, 11:30am, 12:30pm, 2pm, 3pm, 4pm & 5pm

Sunday

10:30am, 11:30am, 12:30pm, 2pm & 3pm

Hall B - Booth 2245

Learn about ASIMO's development and see it walk, run, climb stairs and much more with human-like fluidity.



SCIENCE LASER SPECTACULAR by Prismatic Magic Laser Programs

Have your mind blown by dazzling laser demonstrations and captivating optical illusions!

Saturday & Sunday

Every 30 minutes (starting at 10:00am)
Salon C (by the Mt. Vernon entrance)

HOSTED BY SPIE - THE INTERNATIONAL SOCIETY FOR OPTICS AND PHOTONICS



THIS SCIENCE ISN'T FICTION

Get hands-on at Lockheed Martin's RaD LABS!



Go to Space! Build a Plane! Drive a Rover and so much more...
Get in line early to see it all.

Saturday & Sunday
(starting at 10 AM)

Hall B - Booth 1804

Try your luck at the Career Predictor, fly a full-scale **RAIDER** helicopter, virtually go to a Mars Base Camp and climb on board an F-35 fighter jet. You can also see robots in action, learn about unmanned aircraft and the future of cargo transport and weather prediction!



COLLECT AUTOGRAPHS OF YOUR FAVORITE STEM CELEBS HERE

#SCIFEST



@USASCIENCEFEST



USASCIENCEFESTIVAL



@USASCIENCEFEST

THANKS TO OUR SPONSORS

PRESENTING EXPO SPONSOR

LOCKHEED MARTIN



K&L GATESIUM

K&L | GATES



AMERICIUM

NOBELIUM

Booz | Allen | Hamilton



engineering.com

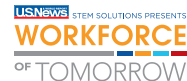


HONDA
The Power of Dreams

MARS



STEMconnector®



EINSTEINIUM

KRYPTON



The American Petroleum Institute (API), Association for Advancing Automation (A3), Campbell Soup Company, Danaher, Deloitte, Physics Today, Schlumberger, Steer Digital, UL XPLORLABS, USDA



AMERICAN
Scientist

C&EN



LINDER
GLOBAL EVENTS



PLATINUM

3M, ACT, American Association of Colleges of Pharmacy, American Farm Bureau Foundation for Agriculture, American Society for Microbiology, The American Society of Landscape Architects (ASLA), Boston Scientific, Carnegie Institution for Science, CASIS, Center for Biotechnology Education at Johns Hopkins University, ePlanetarium, Genentech, George Mason University, Georgetown University, International Brotherhood of Electrical Workers (IBEW), Merck KGaA, Darmstadt, Germany, Micron Technology Foundation, NATCA (National Air Traffic Control Association), National Institute of Standards and Technology (NIST), New Scientist, Orbital ATK, Space Camp, SpaceX, SPIE, Society for Science & the Public, U.S. Department of State, Thermo Fisher Scientific



StanleyBlack&Decker