



# SciFest

## SOCAL

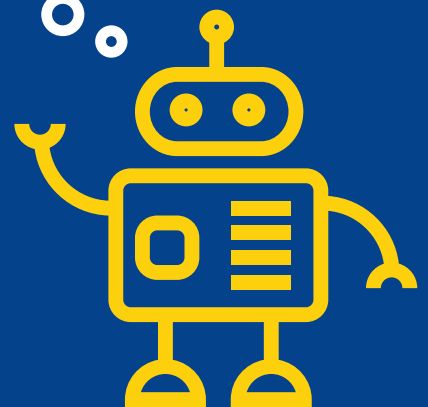
# EXPO

# MAP



**MARCH 22-23, 2019**  
LA CONVENTION CENTER

Let's  
explore



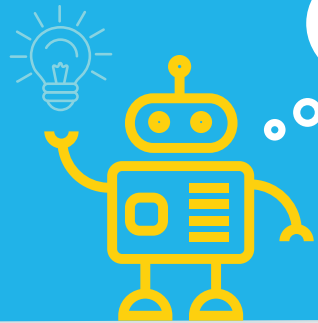
AN EVENT OF



**TAG YOUR PHOTOS**  
**#ClippersSciFest**



# SciFest SOCAL



Follow me on a STEM adventure!

## SOUTH EXHIBIT HALLS LEVEL ONE



FIGUEROA DRIVE

- First Aid/Lactation Room
- Men's Restroom
- Women's Restroom
- All Gender Restroom
- Escalator
- Groundwork Coffee
- ATM
- Restaurant/Concessions

**ENTRANCE HALL G**  
*(Info Booth Hub outside of Hall G entrance)*

1239 Los Angeles Police Department (LAPD)

1237 SeaWorld

1235 FBI

1331 Caltech

935 Experimental Aircraft Association

835

834

539 Proterra

831

827

826

720 LADWP

527 Clippers Fan Van

1126 Kidspace Children's Museum

927 USC Women In Science & Engineering

1213 Color of STEM "HangOut Suite"

1216 1212

913 Play-Well TEKologies

916 817

912 813

908 809

904 805

900 801

1204 Raytheon

1000 LAPD Forensic Science Division

715 Great Minds In STEM

616 571

612 513

509 XYZPRINTING

705 NASA JPL

600 501 Carnegie Observatories

500 401 Hitachi

516 417

413

317 Laserfiche

SoCalGas

216 117

212 113

309 NSF

Info Booth

204 105

200 EcoVivarium Living Museum

116

112

108

104

100

**SOUTH EXHIBIT HALLS G & H**

Meet Miss USA 2017 and SE4K STEAM Advocate, Scientist Kára McCullough at **Booth 627**

Meet Danni Washington from Big Blue & You at **Booth 100**

Meet Tamara Robertson from MythBusters at **Booth 401**

**ENTRANCE HALL H**

**LOST CHILD PROCEDURES:**  
All lost children should be escorted to any Info Booth where attempts to contact family will be made. Should you find a lost child, or lose a child, please contact the nearest Info Booth to radio for assistance.

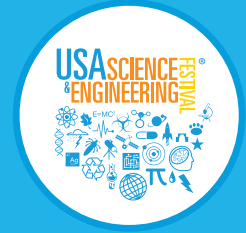
**LOST AND FOUND ITEMS:**  
Items can be taken to, or found at, the Info Booth Hub, located on the ground floor South Hall Lobby.

**FIRST AID & EMERGENCY INFO:**  
For minor emergencies, please take the sick or injured person to any Info Booth or first aid location identified on the map. Info Booths are located in each Hall and the main Info Booth Hub is located in the lobby.

For major emergencies, dial 3000 from any house phone or 213.765.4605 from your cell phone. Due to the size of the Center, we discourage dialing 911 directly to ensure that our first responders are given detailed and accurate location information.

627 629 126

Clippers Partner Schools









**Clippers SciFest SoCal is an event of the USA Science & Engineering Festival**

Founded by the late entrepreneur Larry Bock to address the severe shortage in science and tech talent, the USA Science & Engineering Festival is held biennially in Washington, DC and is the largest celebration of science, technology, engineering and mathematics (STEM) in the country. For nearly a decade, its events and educational programs have inspired kids to pursue career opportunities in the STEM fields. The Festival team is proud to partner with the L.A. Clippers to bring a SciFest to the West Coast. Thank you for joining us at the inaugural Clippers SciFest SoCal! Learn more about the DC Festival at [usasciencefestival.org](http://usasciencefestival.org).

By entering you understand that you may be photographed, taped or recorded. You grant permission for the Clippers SciFest SoCal and its sponsors to use your image or voice in all forms and media as permitted by law. You waive the right to inspect or approve versions of your image or voice or the written copy that may be used in connection with either.

# Booth Numbers

5 Gyres	104
A Quieter Future - Sound Choices	834
Air Line Pilot Association, International	831
AALAS Foundation and Americans for Medical Progress (AMP)	204
American Physical Therapy Association	200
American Society of Naval Engineers	612
Big Blue & You	100
California Cloud Workforce	108
Caltech	1331
Carbide 3D	501
Carnegie Observatories	600
Circuit Breaker Labs	113
Codesters	513
Color of STEM "HangOut Suite"	1213
EcoVivarium Living Museum 	105
Experimental Aircraft Association	935
FBI	1335
General Atomics Aeronautical Systems, Inc.	117
GREAT MINDS IN STEM	715
Hitachi High Technologies America, Inc.	516
iD Tech	500
IDLOGIQ	830
ImmersED	904
International Brotherhood of Teamsters - Airline Division	835
Kidspace Children's Museum 	1126
Kosmos School	908
LA Dodgers	809
LA Metro	1117

LAPD	1239
LAPD Forensic Science Division	1000
Laserfiche	317
Los Angeles City College STEM Academy	805
Los Angeles Dept. of Water & Power (LADWP)	720
Microsoft	916
NASA's Jet Propulsion Laboratory	705
National Air Traffic Controllers Association	827
National Science Foundation	309
Play-Well TEKologies 	913
Proterra	539
Raytheon	1204
Rollts	112
SainStore Inc.	912
Science Exploration for Kids 	627
Science, Naturally!	413
ScienceVR	900
SeaWorld 	1237
Society of Women Engineers	116
SoCalGas	216
Spin Master: Meccano (Toronto Toy Mfg) 	817
Tamara Robertson from MythBusters	401
Tetra Tech, Inc.	826
The Engineer Factory	813
Society of Naval Architects and Marine Engineers (SNAME)	616
UBTECH Education	517
UC San Diego Jacobs School Department of Bioengineering	417
United States Patent and Trademark Office (USPTO)	801
URJ 6 Points Sci-Tech Academy-West	1216
USC Women in Science & Engineering	927
VIVA Robotics	212
xUmp.com - Science Store	1212
XYZPRINTING	509

 Kid-Friendly for 7 & under

## THANK YOU TO OUR SPONSORS

Laserfiche®

Raytheon

